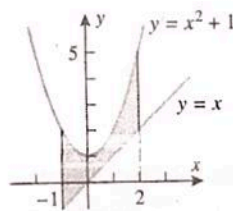


Name: _____
AP Calculus AB Area Between Two Curves HW Day 1

Date: _____
Ms. Loughran

1. Find the area of the shaded region.



In each of the following, sketch the region enclosed by the curves, and find its area.

2. $y = x^2$, $y = \sqrt{x}$, $x = \frac{1}{4}$, $x = 1$

3. $y = e^x$, $y = e^{2x}$, $x = 0$, $x = \ln 2$

4. $y = x^3 - 4x^2 + 3x$, $y = 0$, $x = 0$, $x = 3$