

For 1-12, evaluate the function for the given value of  $x$ .

$$f(x) = \begin{cases} 3, & \text{if } x \leq 0 \\ 2, & \text{if } x > 0 \end{cases}$$

$$g(x) = \begin{cases} x + 5, & \text{if } x \leq 3 \\ 2x - 1, & \text{if } x > 3 \end{cases}$$

$$h(x) = \begin{cases} \frac{1}{2}x - 4, & \text{if } x \leq -2 \\ 3 - 2x, & \text{if } x > -2 \end{cases}$$

1.  $f(2)$

2.  $f(-4)$

3.  $f(0)$

4.  $f\left(\frac{1}{2}\right)$

5.  $g(7)$

6.  $g(0)$

7.  $g(-1)$

8.  $g(3)$

9.  $h(-4)$

10.  $h(-2)$

11.  $h(-1)$

12.  $h(6)$

For 13-18, match the piecewise function with its graph.

13.  $f(x) = \begin{cases} x - 4, & \text{if } x \leq 1 \\ 3x, & \text{if } x > 1 \end{cases}$

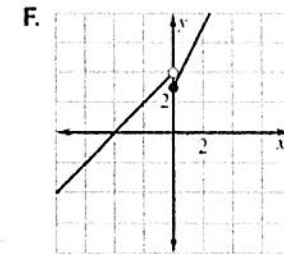
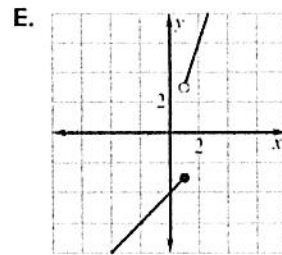
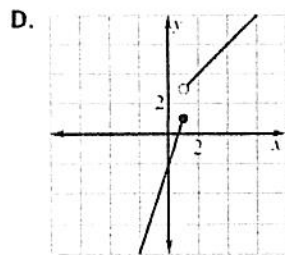
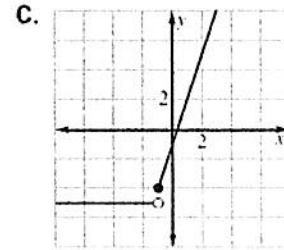
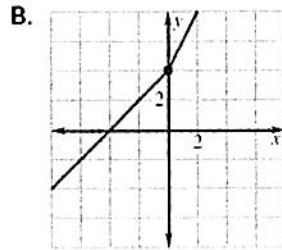
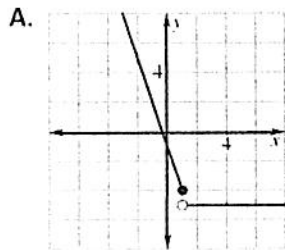
14.  $f(x) = \begin{cases} x + 4, & \text{if } x \leq 0 \\ 2x + 4, & \text{if } x > 0 \end{cases}$

15.  $f(x) = \begin{cases} 3x - 2, & \text{if } x \leq 1 \\ x + 2, & \text{if } x > 1 \end{cases}$

16.  $f(x) = \begin{cases} 2x + 3, & \text{if } x \geq 0 \\ x + 4, & \text{if } x < 0 \end{cases}$

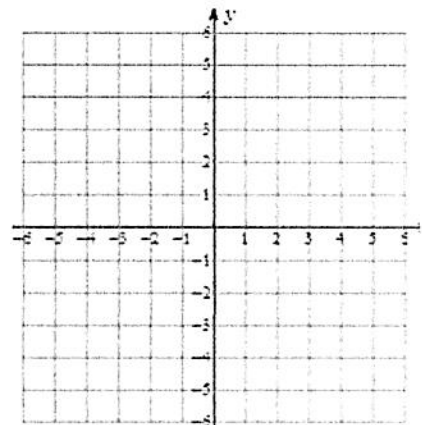
17.  $f(x) = \begin{cases} 3x - 1, & \text{if } x \geq -1 \\ -5, & \text{if } x < -1 \end{cases}$

18.  $f(x) = \begin{cases} -3x - 1, & \text{if } x \leq 1 \\ -5, & \text{if } x > 1 \end{cases}$



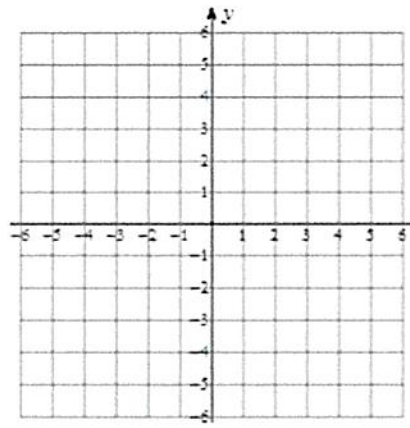
For 19- 21, graph the function.  
 19.

$$f(x) = \begin{cases} x + 3, & \text{if } x \leq 0 \\ 2x, & \text{if } x > 0 \end{cases}$$



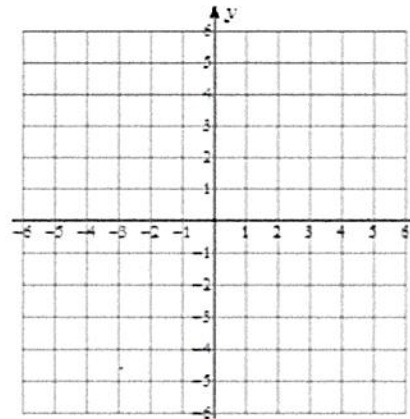
20.

$$f(x) = \begin{cases} x + 1, & \text{if } x < 0 \\ -x + 1, & \text{if } 0 \leq x \leq 2 \\ x - 1, & \text{if } x > 2 \end{cases}$$



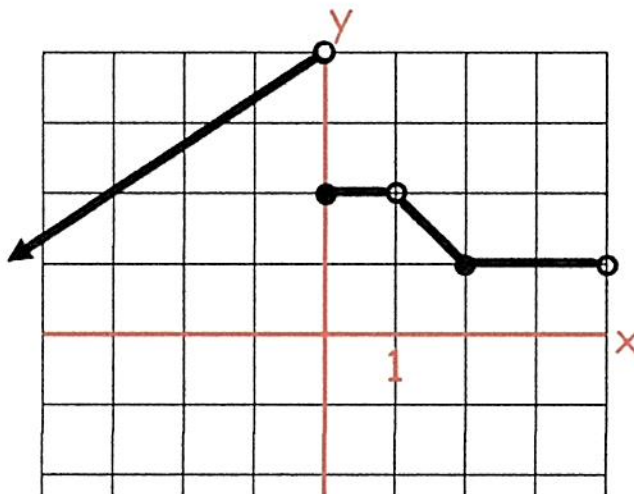
21.

$$f(x) = \begin{cases} 2, & \text{if } x \leq -3 \\ -1, & \text{if } -3 < x < 3 \\ 3, & \text{if } x \geq 3 \end{cases}$$

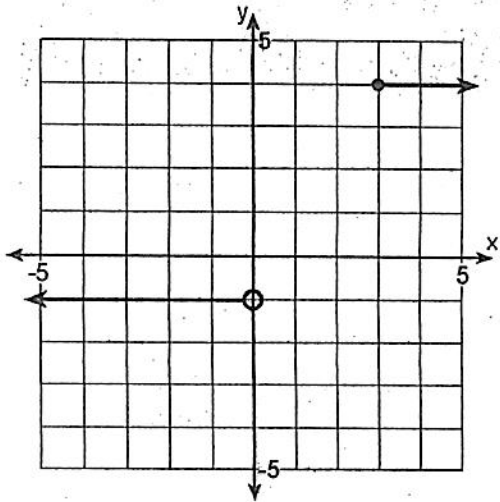


For 22-28 , write functions for each of the following piecewise graphs .

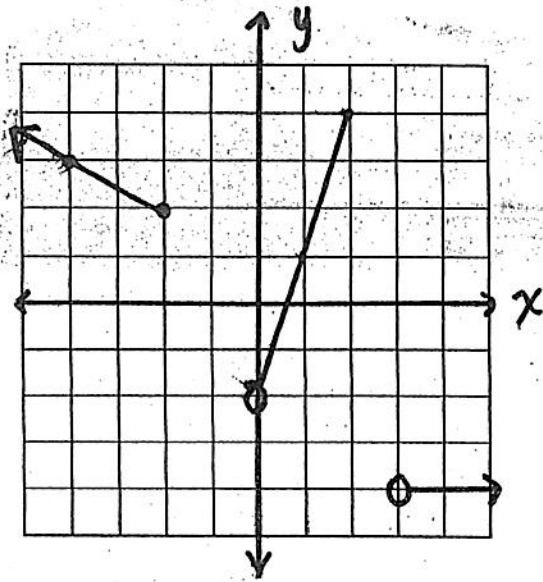
22.



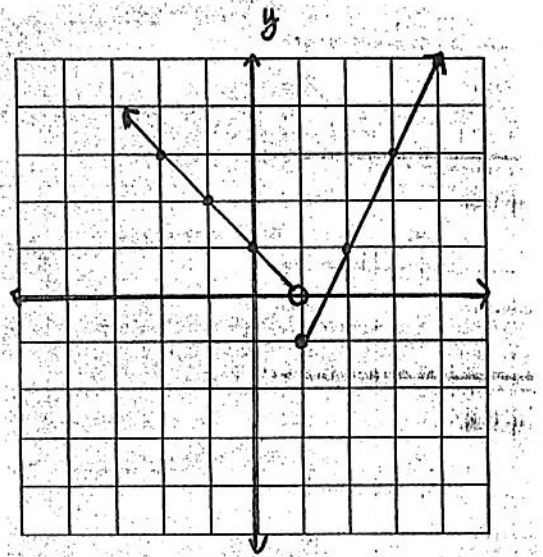
23.



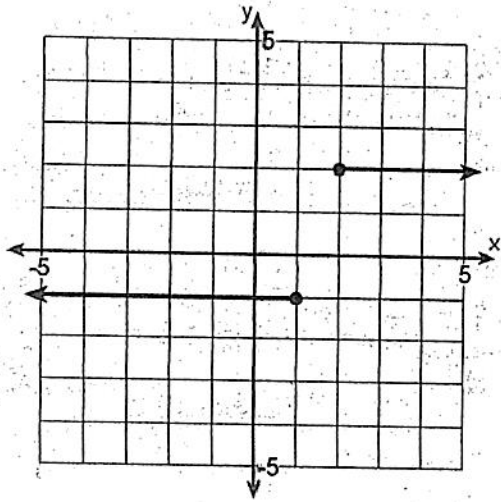
24.



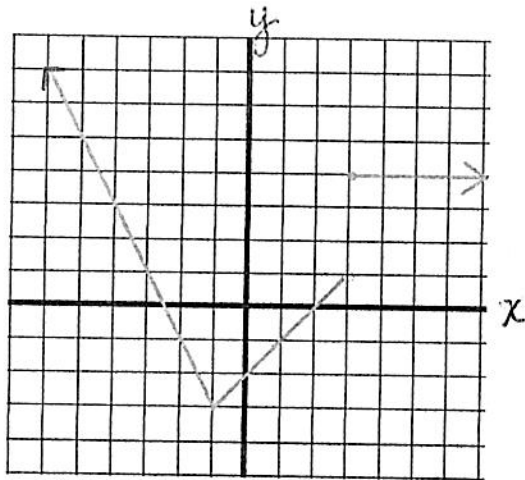
25.



26.



27.



28.

